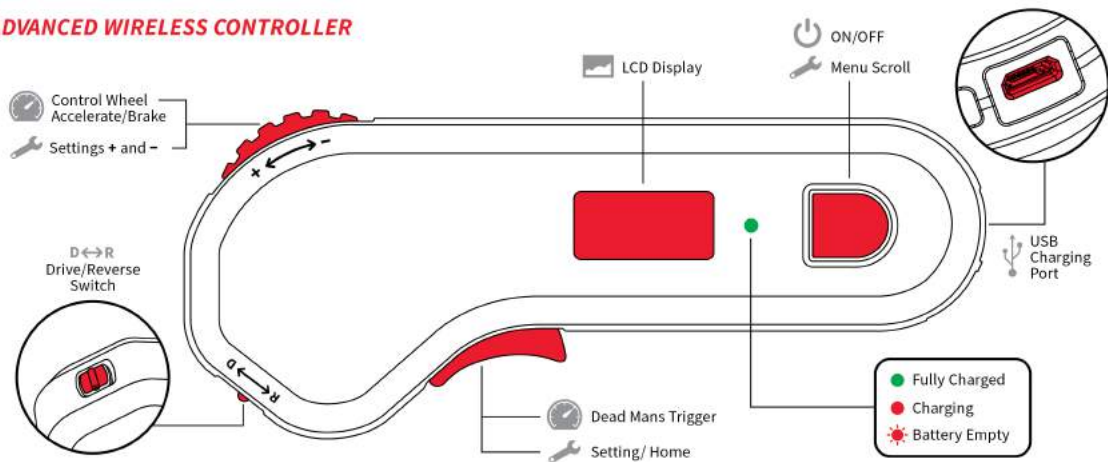




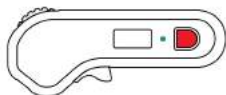
ADVANCED WIRELESS CONTROLLER

ADVANCED WIRELESS CONTROLLER



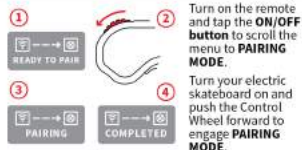
QUICK GUIDE

POWER ON/OFF



Press and hold the **ON/OFF** button for 2 seconds. (Locked while riding). Press the **ON/OFF** button to scroll through the MENU options.

PAIRING MODE



BRAKE MODE



Tap Press the **ON/OFF** button to scroll to **BRAKE MODE**. Use the Control Wheel to change between **BRAKE MODES**.

HOMESCREEN



The wheel icon will flash if not connected.

SPEED MODE

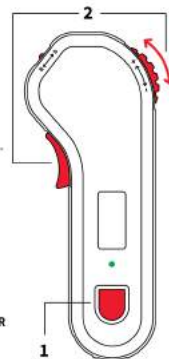


Tap Press the **ON/OFF** button to scroll to **SPEED MODE**. Use the Control Wheel to change between **SPEED MODES**.

OPERATING THE ADVANCED WIRELESS CONTROLLER


1. Turn on the **ADVANCED WIRELESS CONTROLLER**. (After first pairing and calibrating).


2. Press the **DEAD MANS TRIGGER** and rotate the Control Wheel to go forward. The **DEAD MANS TRIGGER** must be engaged to go forward but not to brake.





REMOTE CALIBRATION


Tap press the **ON/OFF button** 4 times to scroll to **CALIBRATION**. This helps the **Control Wheel** position itself and only needs to be done once.


- 

Push the **Control Wheel** Forward, **MAX** should be flashing.
- 

Hold the **Control Wheel** all the way forwards and tap press the **ON/OFF button** once. This sets the forward **CALIBRATION** for the control wheel.
- 

Release the **Control Wheel** to **Neutral Position**. **MED** should now be flashing.
- 

Tap press the **ON/OFF button**, **MIN** should now be flashing. This sets the **CALIBRATION** for the neutral position.
- 

Hold the control wheel all the way back, tap press **ON/OFF** once. This sets the brake **CALIBRATION** for the **Control Wheel**.
- 

Tap press **ON/OFF** twice to complete **CALIBRATION**.

UNIT OF SPEED



Max speed of your current ride.

Use the Control wheel to switch between **KPH** and **MPH**. Press **ON/OFF** to confirm.

FORWARD/REVERSE

Switch to **D** for normal use.



Switch to **R** for reverse. (limited to 3mph).

BATTERY VOLTAGE



Press **ON/OFF** to scroll to the **BATTERY VOLTAGE SCREEN** showing real time voltage levels. If **0.00V** shows, the electric skateboard is disconnected.

STOP REMOTE PAIRING



If there are any **PAIRING** issues, press the **DEAD MANS TRIGGER** to cancel or restart **PAIRING**.

WHEEL SIZE



83mm Slick



110mm Rough Stuff

Tap press **ON/OFF button** to select **WHEEL SIZE**. Use the Control Wheel to switch modes. Press the **DEAD MANS TRIGGER** to return to home page.



ADVANCED WIRELESS CONTROLLER

JOIN OUR AFFILIATE PROGRAM



JOIN

Sign up at slickrevolution.co.uk/affiliate-area



SHARE

Share your unique URL with the world.



REWARD

Earn in-store credit for every completed order using your link.

USE YOUR ADVANCED CONTROLLER TO LINK TO OUR WEBSITE

Out and about riding and want to link people to Slick Revolution?

Simply tap your controller on any phone with an **NFC scanner app** to open our website.

